

Assembly Instruction for Roof-Decoration-Figures

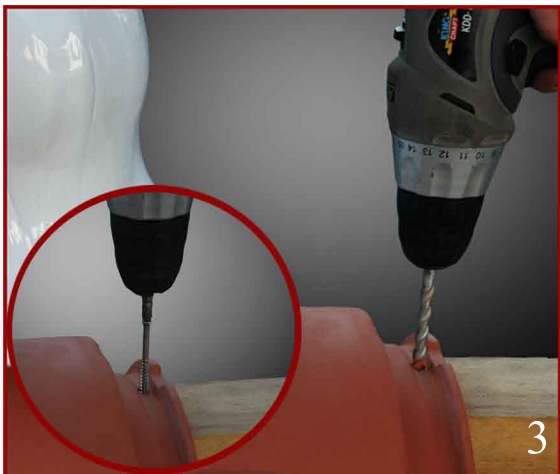


First, drill a hole through the ridge tile.

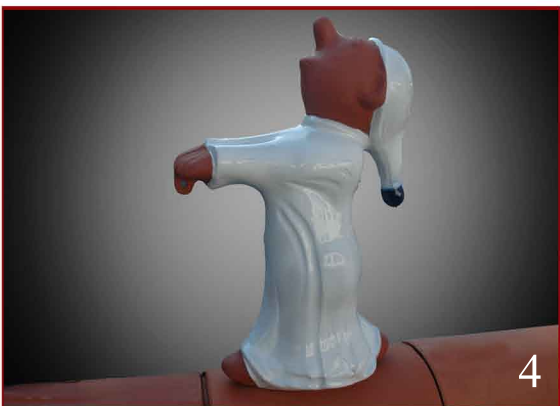


Second, use the included hex bolt and the washer to bolt the figure with the ridge tile together.

Attention! Tighten the screw only hand-tight!



Third, the ridge tile self should be fixed via a countersunk head screw on the dry ridge. For that purpose the nail hole of the ridge tile needs to be drilled to be bigger. (If the nail hole is not existing, please drill a new hole.)



Pay attention for the following hints!!

Fourth, if the ridge tile has a smaller radius than the fitting surface of the figure, please use a layer of mortar to correct between the figure and the ridge tile.

Do **NOT** use silicone or glue under any circumstances, which stops the moisture exchange. The moisture exchange is essential and must be preserved! (For the case of application silicone or glue, the warranty will expired.)